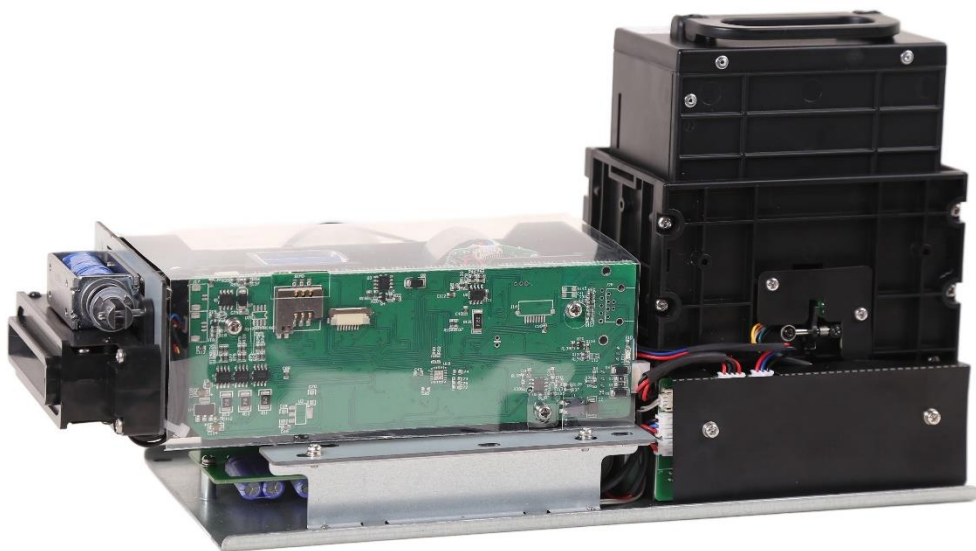


<h1>USER MANUAL</h1>			
Model Name: K212-M800			
Version	1.1	Date	2022-5-13

# K212-M800

## 3 in 1 CARD DISPENSER



- ◆ -Magnetic card read and write
- ◆ -Contact IC card read and write
- ◆ -RFID Card read and write
  
- ◇ Card Box : 100pcs / 150pcs optional

# USER MANUAL

## I .BRIEF INTRODUCTION

K212-M800 adopts fully enclosed movable card box, closed recycling box, support IC/RFID/magnetic card reading/writing, and card issuing. Composite plastic with high temperature, abrasion and aging resistance and two sides of card movement channel are embedded with stainless steel metal. It makes product with advancement in strength and precision. Module installation structure is convenient for customers to maintain product. Elaborate design and part combination makes product with fresh appearance and its precision meets or overpass the same product all over the world. Excellent circuit design takes multiple protection functions into consideration. It is a card reading equipment that can read or write many types of cards, supporting 4 pieces SIM card operation.

## II . FUNCTION

- **Usage:** Support IC/RFID/magnetic card reading/writing, and card issuing.
- **Card box:** Fully enclosed movable card box with 110pcs card capacity.
- **Non-metal channel:** Non-metal dispensing channel ensure card reading performance of contactless card not be affected.
- **Card empty and pre-empty detect function and sound alarm**
- **Card stand position:** Many card stand positions to satisfy customer requirements
- **Communication interface:** RS232 serial interface, suitable for multiple machines
- **Recycling box:** Small and movable recycling box supports storage 10pcs cards (0.76mm thickness)

### III .SPECIFICATION AND PARAMETER

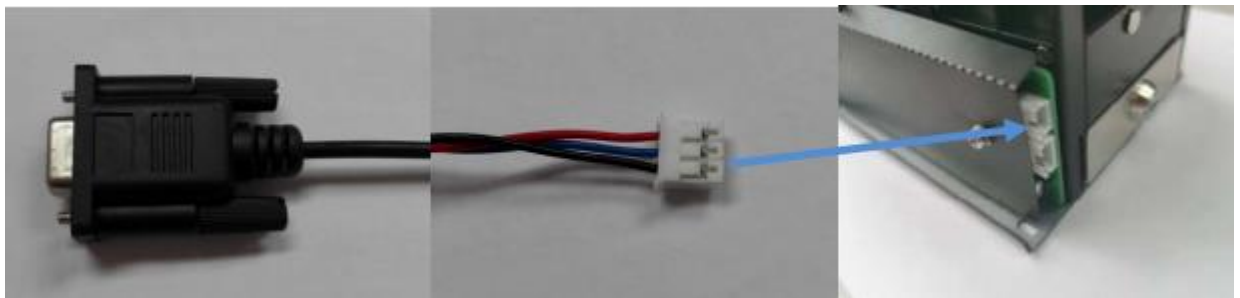
- **Operation Power:** DC 24 V (MAX CURRENT 3A, Static current 100mA)
- **Operation Temp:** 0 °C to 45°C
- **Operation Humi:** 30 ~ 90% (Relative Humidity)
- **Interface:** RS232
- **Operation Condition:** Install in the cabinet, control by protocol command
- **Card Size:** Width:54 ± 0.5 mm Length : 85 ± 0.5 mm Thickness: 0.7 ~ 0.9 mm
- **Card Material:** Paper card and PC card
- **Support Magnetic card type:** Complies with ISO7810 , ISO7811 (1-6) , ISO7812 , ISO7813, ISO15457
- **Support contact IC card type:** ISO7816 normal storage card,logic encryption card, reading and writing support.
- **Support contactless IC card type:** ISO14443、TYPEA、TYPEB contactless card reading and writing
- **Protection:** Anti-theft swipe card
- **Card box capacity:** 110pcs standard card(0.76mm thickness)
- **Recycling box capacity:** 10pcs standard card(0.76mm thickness)
- **Few card alert:** 20pcs cards

## IV .INTERFACE EXPLANATION AND DRAWING



### 1. RS232 serial port connecting instruction for K212-M800.

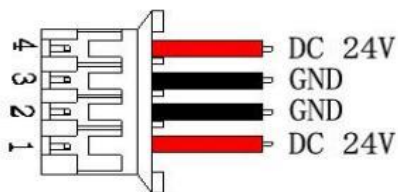
- A. Find the accessory of DB9 data cable and connect the DB9 connector to the PC。
- B. Connect the other side of the accessory data cable to the communication interface  
on the back PCB board of K212-M800 with 3PIN connector (Red wire is TXD,  
Blue wire is RXD, Black wire is GND)



DB9 Connector to the PC

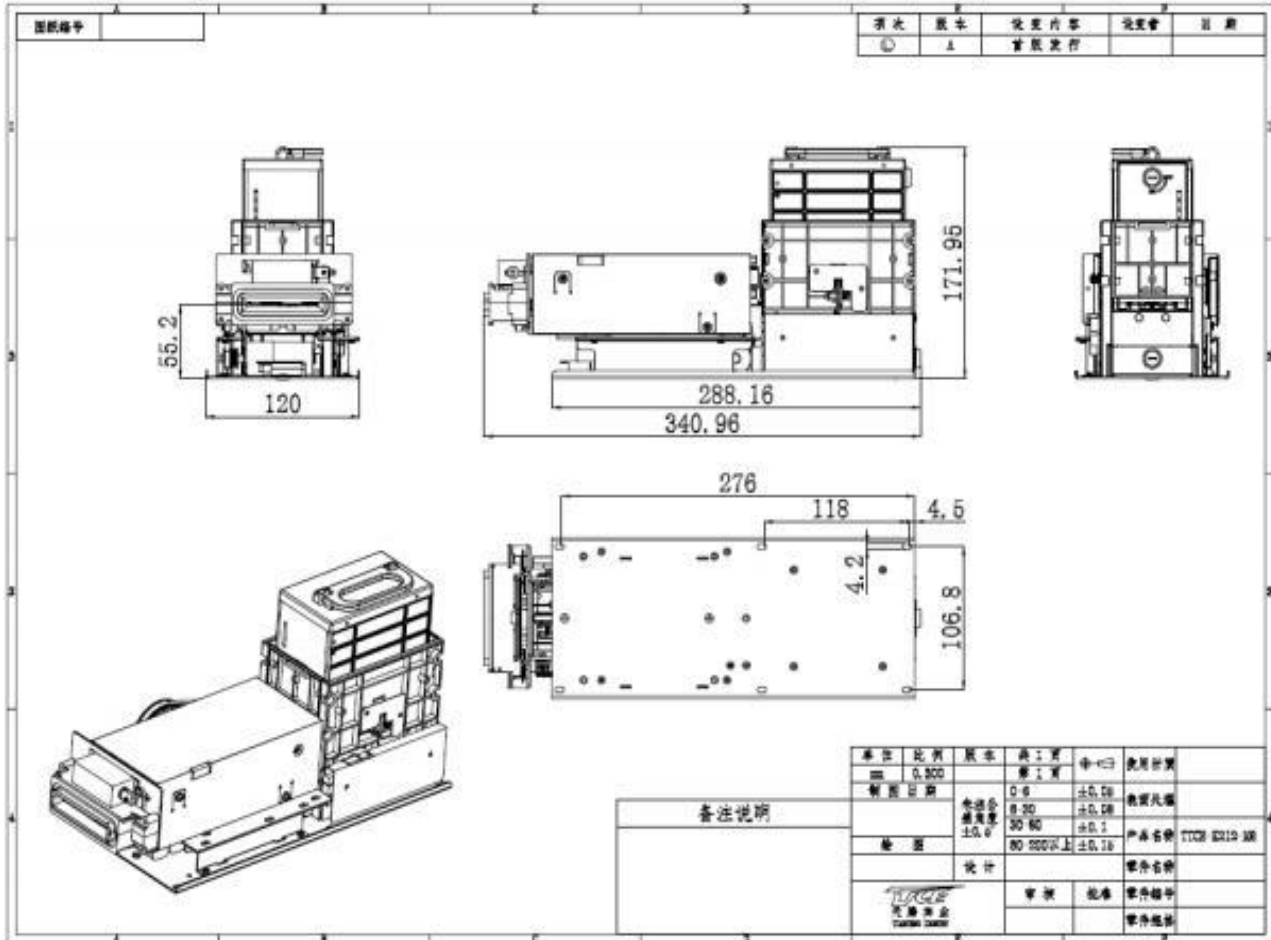
3PIN connector to K212-800

### 2. Power cable



**NOTE: TO AVOID sudden high power damage, please connect the communication wire before connect the Power cable.**

# V.INSTALLATION AND STRUCTURE DRAWING



图次	版本	变更内容	变更者	日期
1	1	首次发行		

单位	比例	版本	加工	中心	使用日期
mm	0.500		第 1 版		
解 说			0-6	±0.10	数量代码
			8-30	±0.10	
			30-60	±0.1	产品名称 TUCS 8212 300
			80-200以上	±0.10	
			设计		零件名称
			审核	批准	零件编号
					零件规格

备注说明

## VI. CAUTION DURING OPERATION

- 1) When connecting interface, please connect with communication interface first, then power interface. And then power on.
- 2) To make your product safe, the input voltage please not above 40V.
- 3) Please set BPS rate correct. EX-work set is 9600bps.
- 4) During operation, card insert direction should be correct
  - a) When inserting magnetic card, magnetic stripe should face down and insert on the right side.
  - b) When inserting IC card, chip should face up. If insert from the front, the end close to chip should be inserted into card reader first. If insert from the rear, the end away from chip should be inserted into card reader first.
  - c) When inserting RF card, directions are not considered. But it can only be operated at RF position.
- 4) When there is card in the machine, error message will be given if inserting card again. And motor door will not open.
- 5) When shutting off power, power interface should be shut off first, then communication interface.
- 6) Power off during operation or other abnormal reason lead to card staying in the machine and cannot be taken out, please take out card by pulling belts manually.

## VII. Mantainace

1. Transmitter maintenance
  - a) Select "Check transmitter status" in "card reader control command screen".
  - b) In normal condition, information of transmitters in text box will all show "No card".
  - c) If one or several transmitters show "Have card", maybe they are covered with dirt.
  - d) Should disassembly card reader and clean it.
2. Magnetic head maintenance Use cleaning card to clean magnetic head in card reader.
3. Detecting pin contact maintenance Dirt on the detecting pin of IC card makes machine not connect well with IC card chip. You should disassembly machine to clean it. Please refer to "disassembly method drawing".

4. Gear maintenance Check gear periodically and clean dirt with alcohol.

## VIII WARRANTY

1) Our products have one year free warranty. Warranty period starts from the date that users receive products.

Repairing method is that users send products to our factory for repairing.

3) After the warranty period, our company will still provide after sale service.

In case it is involved with changing parts, our company will charge a certain material cost. But for the below condition even in the warranty period, our company will charge a certain repairing fee in repairing.

- a) Damage or trouble caused by human error after purchase;
- b) Damage or trouble caused by operation of unprofessional technician;
- c) Damage or trouble caused by unstable outer power or voltage;
- d) Trouble and damage caused by force majeure such as earthquake etc.